

# Wildfire Smoke and Related Health Hazards

Tiffany Floyd  
Administrator  
Air Quality Division

Mary Anderson  
Planning Bureau Chief  
Air Quality Division

Dr. Christine Hahn  
Medical Director  
Division of Public Health

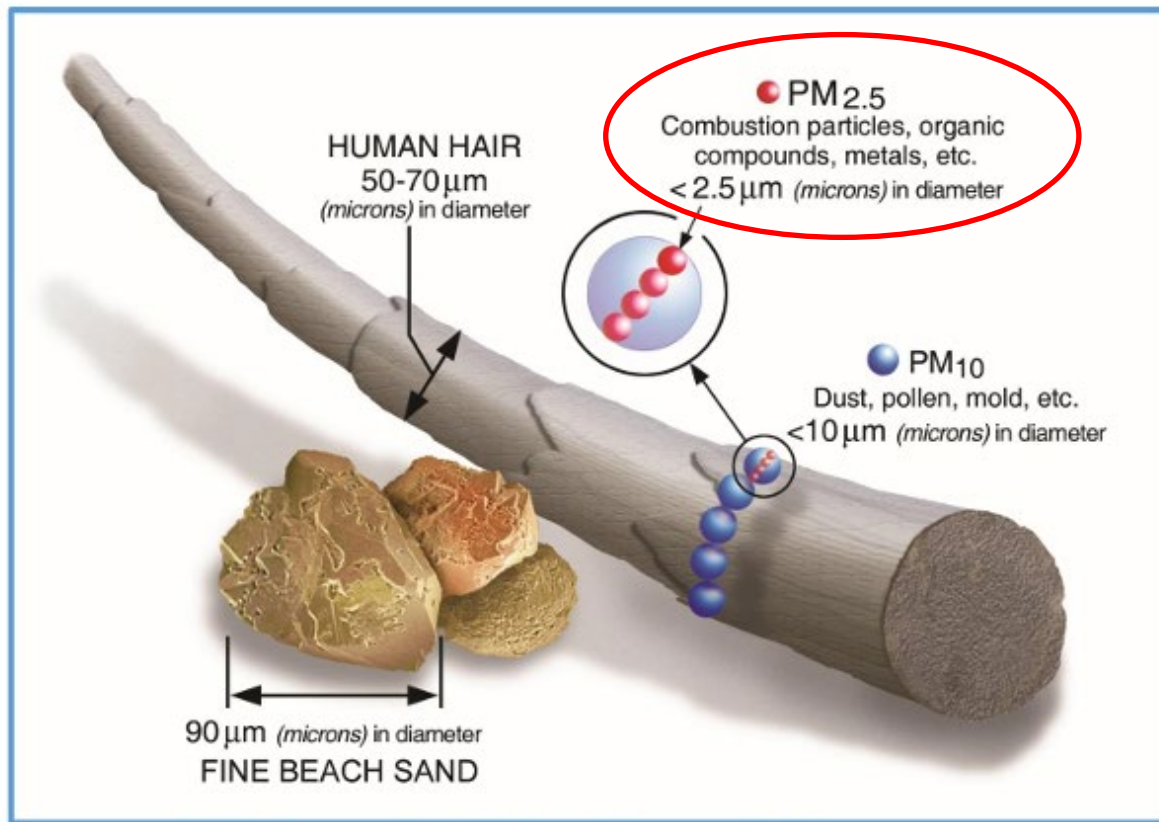


STATE OF IDAHO  
DEPARTMENT OF  
ENVIRONMENTAL QUALITY



IDAHO DEPARTMENT OF  
**HEALTH & WELFARE**  
DIVISION OF PUBLIC HEALTH

# Particulate Matter: why so dangerous?



Source: U.S. EPA (<https://www.epa.gov/pm-pollution/particulate-matter-pm-basics>).

# Which Health Effects are related to Wildfire Smoke?

## WILDFIRE SMOKE IMPACTS:

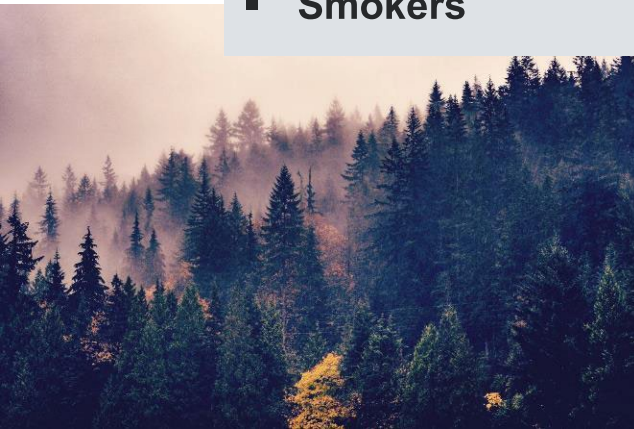
- Respiratory irritation and illnesses
- Declines in lung function
- Asthma attacks
- Respiratory infections such as pneumonia and bronchitis
- Respiratory-related deaths

## WILDFIRE SMOKE MAY ALSO IMPACT:

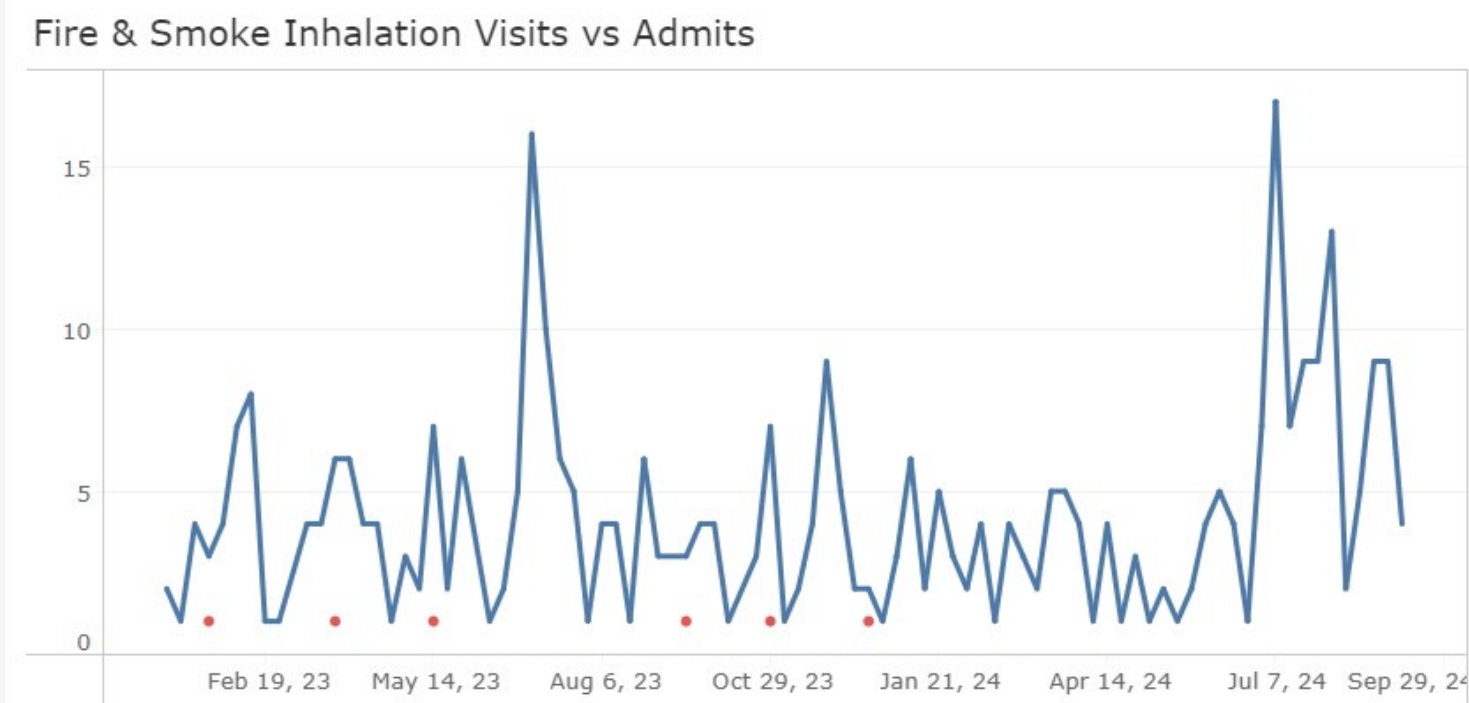
- Heart attacks and other cardiovascular events
- Adverse pregnancy outcomes
- Declines in mental health
- Skin diseases
- Eye conditions
- Cancer occurrence

# Who is most at risk?

- People with Chronic Lung Diseases
- People with Heart Conditions
- Elderly
- Children
- Pregnant women
- Outdoor workers, including firefighters
- Smokers



# Emergency and Acute Care Visits– Idaho, 2023-2024



## Wildfire Smoke

Smoke and airborne particles from wildfires can impact the air quality in Idaho during the summer and fall. Be sure to check the air quality near you and seek clean air during smoky days.

Wildfire smoke can be particularly harmful for sensitive groups including people with lung and cardiovascular conditions, pregnant women, children, and older people. Learn about resources to protect your health from smoke.


### [PROTECT YOURSELF FROM SMOKE AND EXTREME HEAT](#)



Real Time Air Quality Updates From  
DEQ

[Check air quality in Idaho](#) 


### Idaho resources

[Free brochures and posters available on  
Shopify](#) 

[Guide for Staying Healthy During Wildfire  
Smoke](#) 

[Activity Guidelines for Wildfire Smoke  
Events](#) 

[School Activity Guidelines for Wildfire  
Smoke Events](#) 

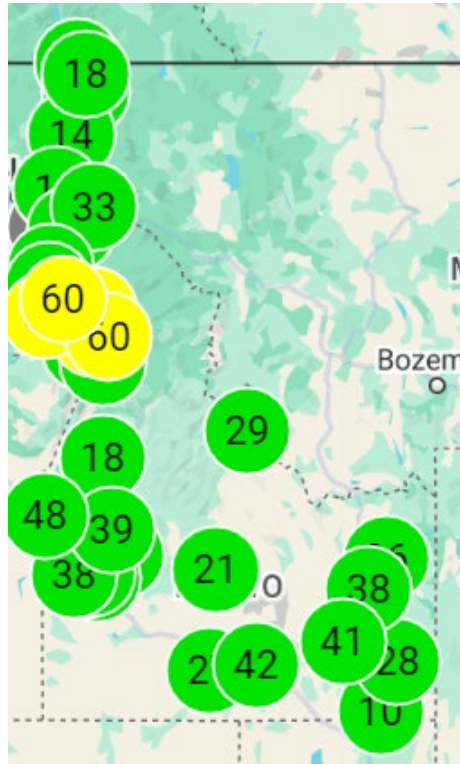
[Idaho Smoke Blog](#) 

[Smoke and Your Health bifold](#) 

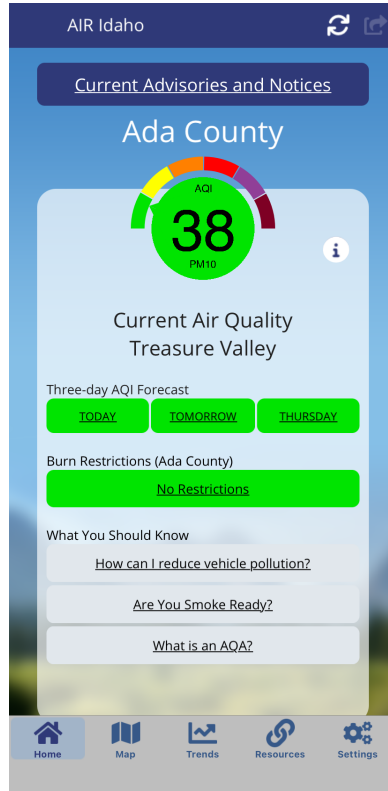
[Wildfire Smoke Readiness 11x17 Poster](#)  


[El humo y la salud de su familia](#) 

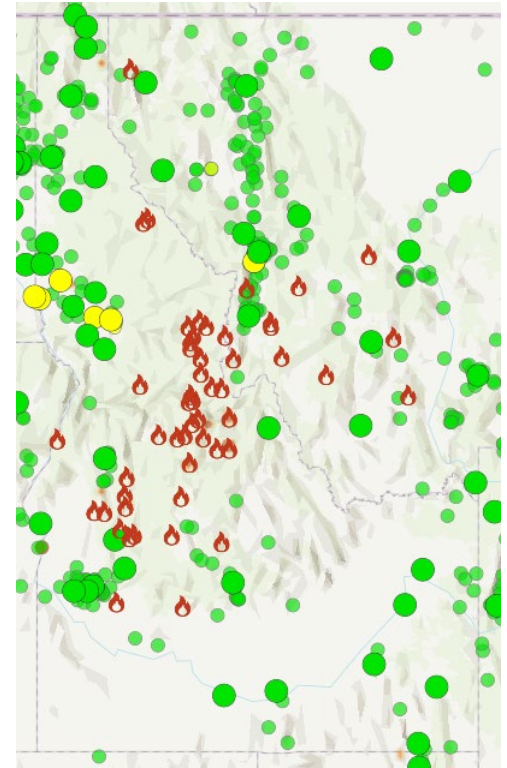
# Air Quality Data to the Public



[DEQ's Real-Time Monitoring Map](#)



DEQ's AIR Idaho Mobile App  
[Google Play](#): [Apple](#)  
[App Store](#)



[AirNow Fire and Smoke Map](#)

# Air Quality Index (AQI)

## Good

Air quality is satisfactory, and air pollution poses little or no risk.

## Moderate

Air quality is acceptable. However, there may be a risk for some people, particularly those who are unusually sensitive to air pollution.

## Unhealthy for Sensitive Groups

Members of sensitive groups may experience health effects. The general public is less likely to be affected.

## Unhealthy

Some members of the general public may experience health effects; members of sensitive groups may experience more serious health effects.

## Very Unhealthy

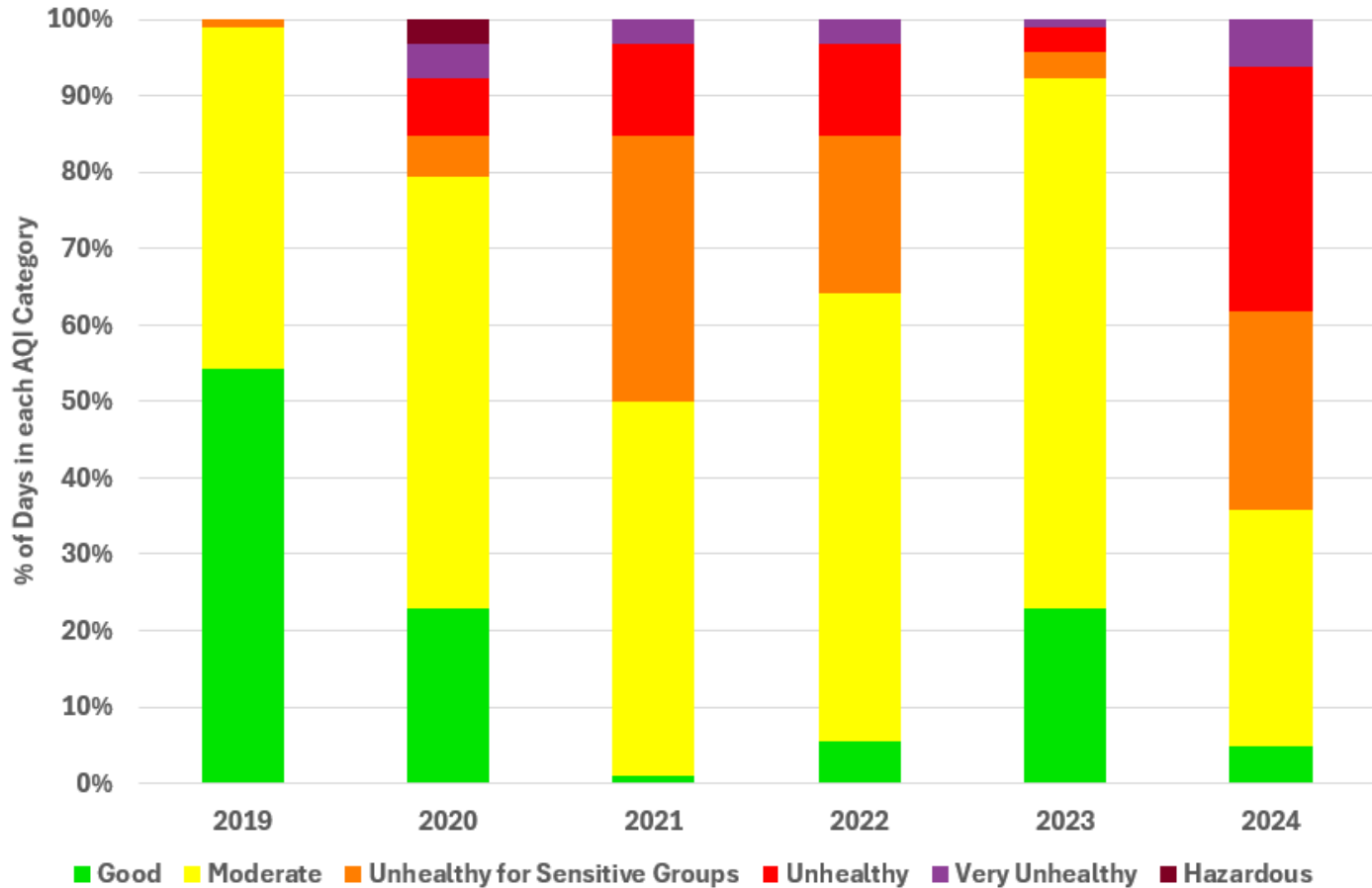
Health alert: The risk of health effects is increased for everyone.

## Hazardous

Health warning of emergency conditions: everyone is more likely to be affected.



# Air Quality Index (AQI) July 1 - September 30 (2024 Season July 1 - September 19)



# Questions?



STATE OF IDAHO  
DEPARTMENT OF  
ENVIRONMENTAL QUALITY